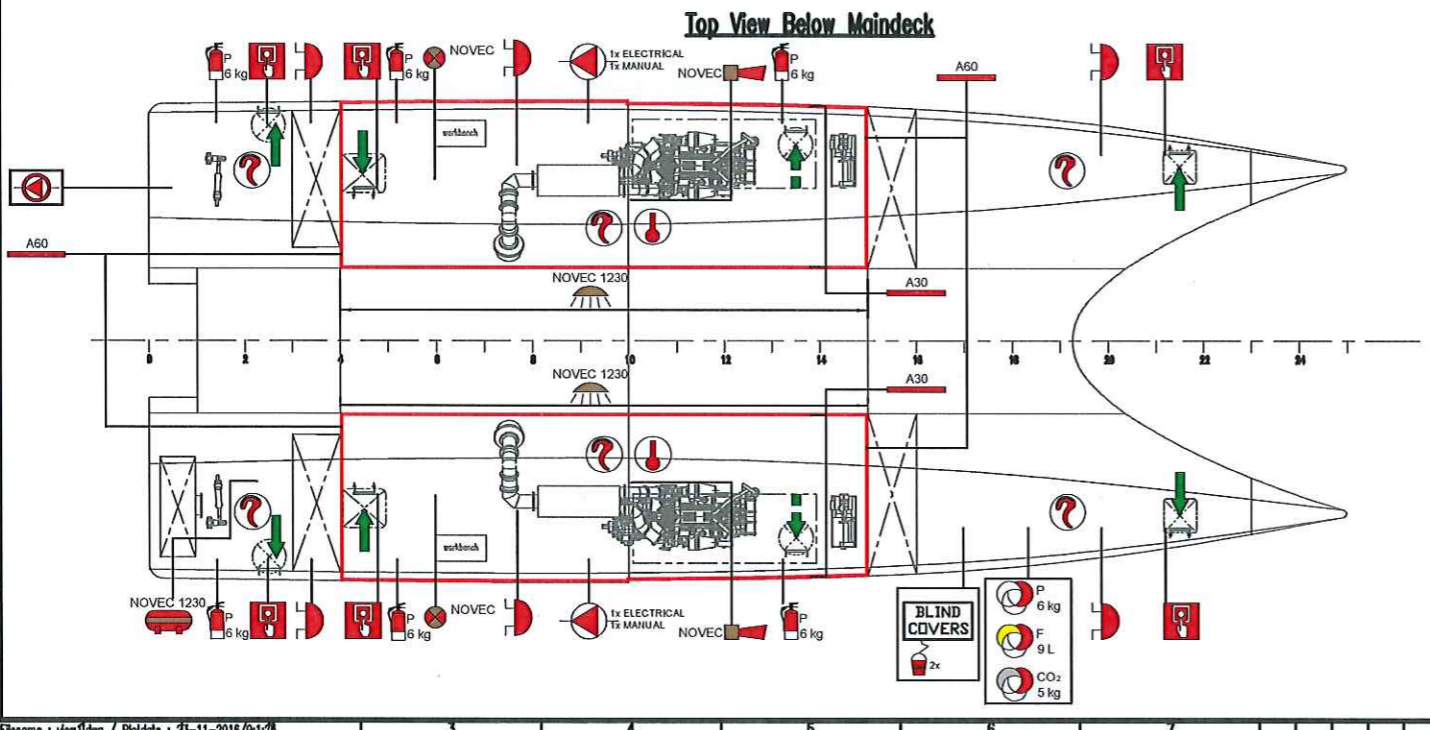
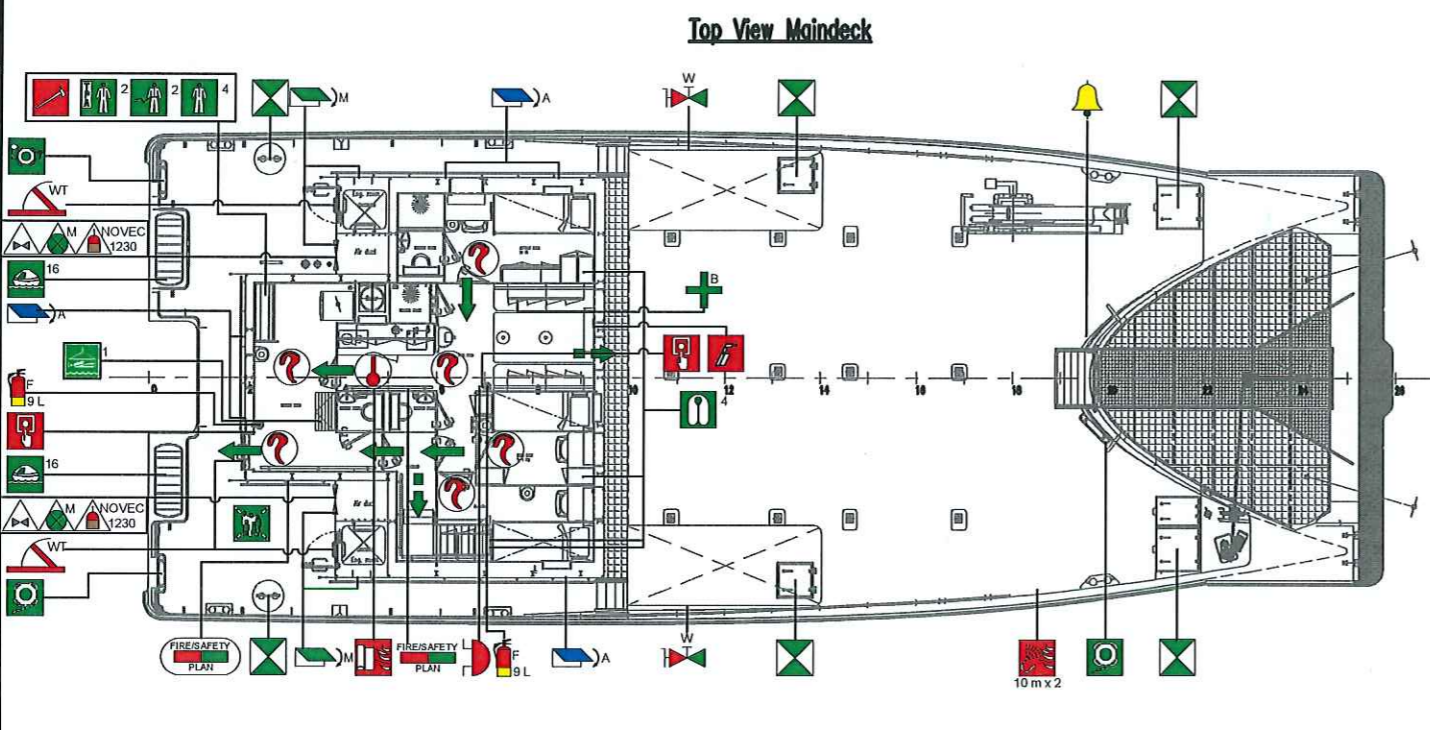
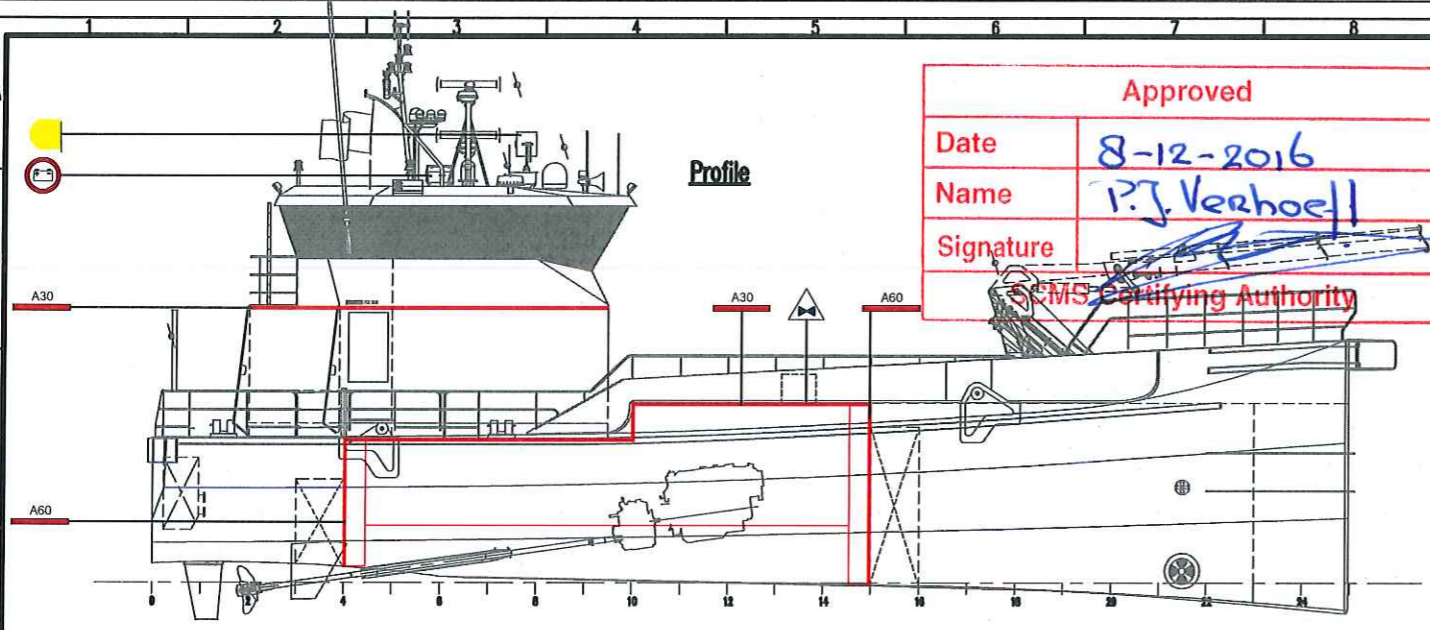


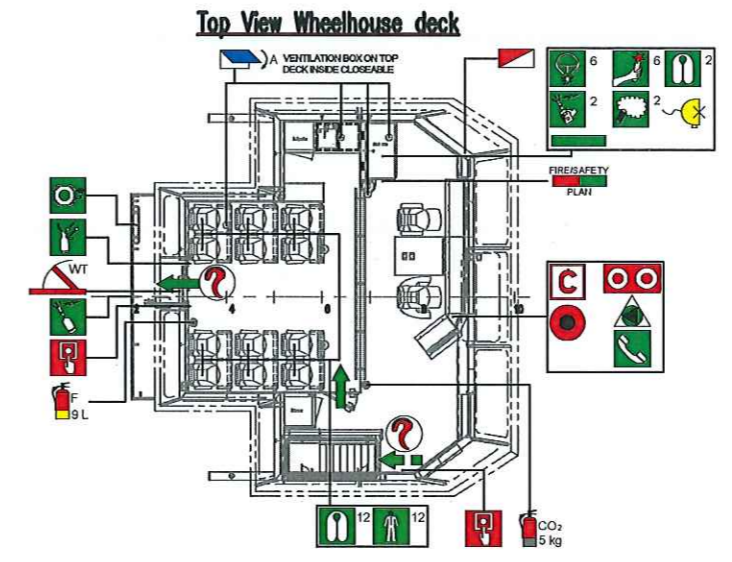
**Approved**

Date	8-12-2016
Name	P.J. Verhoef
Signature	

SCMS Certifying Authority



SYMBOL	QTY.	DESCRIPTION	SYMBOL	QTY.	DESCRIPTION
	2	FIRE CONTROL & SAFETY PLAN		-	A30 CLASS DIVISION
	1	FIRE CONTROL & SAFETY PLAN IN WATERTIGHT CONTAINER		-	A60 CLASS DIVISION
	-	PRIMARY ESCAPE ROUTE		1	FIRE BLANKET
	-	SECONDARY ESCAPE ROUTE		2	FIRE PUMP (GENERAL SERVICE PUMP) (25 m³/hr)
	1	EMERGENCY HAMMER		2	FIRE HYDRANT
	1	FIREMAN'S AXE		2	HOSE BOX WITH ( 2 x 10m SPRAY / JET FIRE NOZZLES)
	6	WATERTIGHT ESCAPE HATCH		2	SPACE PROTECTED BY NOVEC 1230
	1	FIXED ADJUSTABLE SEARCH LIGHT		1	FIXED NOVEC 1230 INSTALLATION CONTENT: 84 Kg
	1	PORTABLE SEARCH LIGHT 2500 lm		2	REMOTE CONTROL NOVEC 1230 RELEASE
	1	MUSTER LIST		2	NOVEC ALARM LIGHT
	1	FIRST AID KIT, TYPE B		2	FM200 ALARM HORN
	2	SAFETY HARNESS		6	POWDER EXTINGUISHER
	2	THERMAL PROTECTIVE AID (T.P.A.)		3	FOAM EXTINGUISHER
	16	IMMERSION SUIT		1	CO <sub>2</sub> EXTINGUISHER
	18	LIFEJACKET (INFLATABLE)		6	SPARE CHARGES FOR POWDER EXTINGUISHER
	1	LIFEBUOY WITH LIGHT AND SMOKE		3	SPARE CHARGES FOR FOAM EXTINGUISHER
	2	LIFEBUOY WITH 30m LINE		1	SPARE CHARGES FOR CO <sub>2</sub> EXTINGUISHER
	1	LIFEBUOY WITH LIGHT		3	SPACE MONITORED BY HEAT DETECTOR(S)
	16	LIFERAFT FOR 16 PERSONS		14	SPACE MONITORED BY SMOKE DETECTOR(S)
	1	JASON CRADLE		7	GENERAL ALARM / FIRE ALARM BELL
	1	EMERGENCY TELEPHONE		1	PUSH-BUTTON / SWITCH FOR GENERAL / FIRE ALARM
	1	EMERGENCY POSITION INDICATING RADIO BEACON (E.P.I.R.B.)		1	CONTROL PANEL FOR FIRE DETECTION AND ALARM SYSTEM
	2	TWO-WAY VHF RADIOTELEPHONE APPARATUS (G.M.D.S.S.)		1	CONTROL STATION
	1	SEARCH AND RESCUE TRANSPONDER (S.A.R.T.)		1	STOP MAIN ENGINES
	2	SMOKE SIGNAL		2	REMOTE CONTROL FOR COOLING WATER VALVES
	6	RED HANDHELD FLARES (SET OF 6 PIECES)		1	REMOTE CONTROL FOR BILGE PUMP
	6	ROCKET PARACHUTE FLARES (SET OF 6 PIECES)		2	REMOTE CONTROL FOR FUEL OIL VALVES
	1	SHIP'S BELL		2	VENTILATION REMOTE SHUT-OFF MACHINERY SPACE
	1	BLIND COVERS FOR WINDOWS (SET)		4	CLOSING DEVICE FOR VENTILATION IN MACHINERY SPACE
	1	ASSEMBLY STATION		9	CLOSING DEVICE FOR VENTILATION IN ACCOMMODATION
				4	WEATHER TIGHT HINGED DOOR
				10	MANUALLY OPERATED CALL POINT
				1	EMERGENCY BATTERY
				1	PORTABLE FIRE-FIGHTING PUMP (... m³/hr, ... bar)
				2	FIRE BUCKET WITH LINE



C	22-11-2016	Cfe	Cfe	Added assembly station, updated formatting		
B	02-11-2016	Cfe	Cfe	Updated to MCA		
A	09-06-2015	ZLA	LDV	Removed fire extinguisher foam - 6 Lit from Maindeck fard		
REV	DATE	DRWN	CHKD	APPRD	REVISION	SUBJECT
				<b>DAMEN</b> DAMEN SHIPYARDS GORINCHEM		
COPYRIGHT DAMEN SHIPYARDS GROUP		Havenweg 11, 4400 AA Gorinchem, The Netherlands Tel: +31 (0)183 83 99 11 Fax: +31 (0)183 83 99 11 Email: info@damen.nl				
DRAWN	ZLA	FORMAT	A1	PROJECTION		
CHECKED	AJBS	SCALE	1:75			
APPROVED		DATE	02-06-2015			
<b>Fire and safetyplan</b>						
COMP NO	TYPE	FCS 2610	DERIVED FROM DWG			
SECT NO	YARD NO	532541	DWG NO	532541-570-401	SHEET	REVISION
	YARD NO	building yard				C